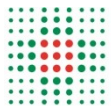


# Regolamento di Organizzazione Aziendale Parte II ORGANIGRAMMI

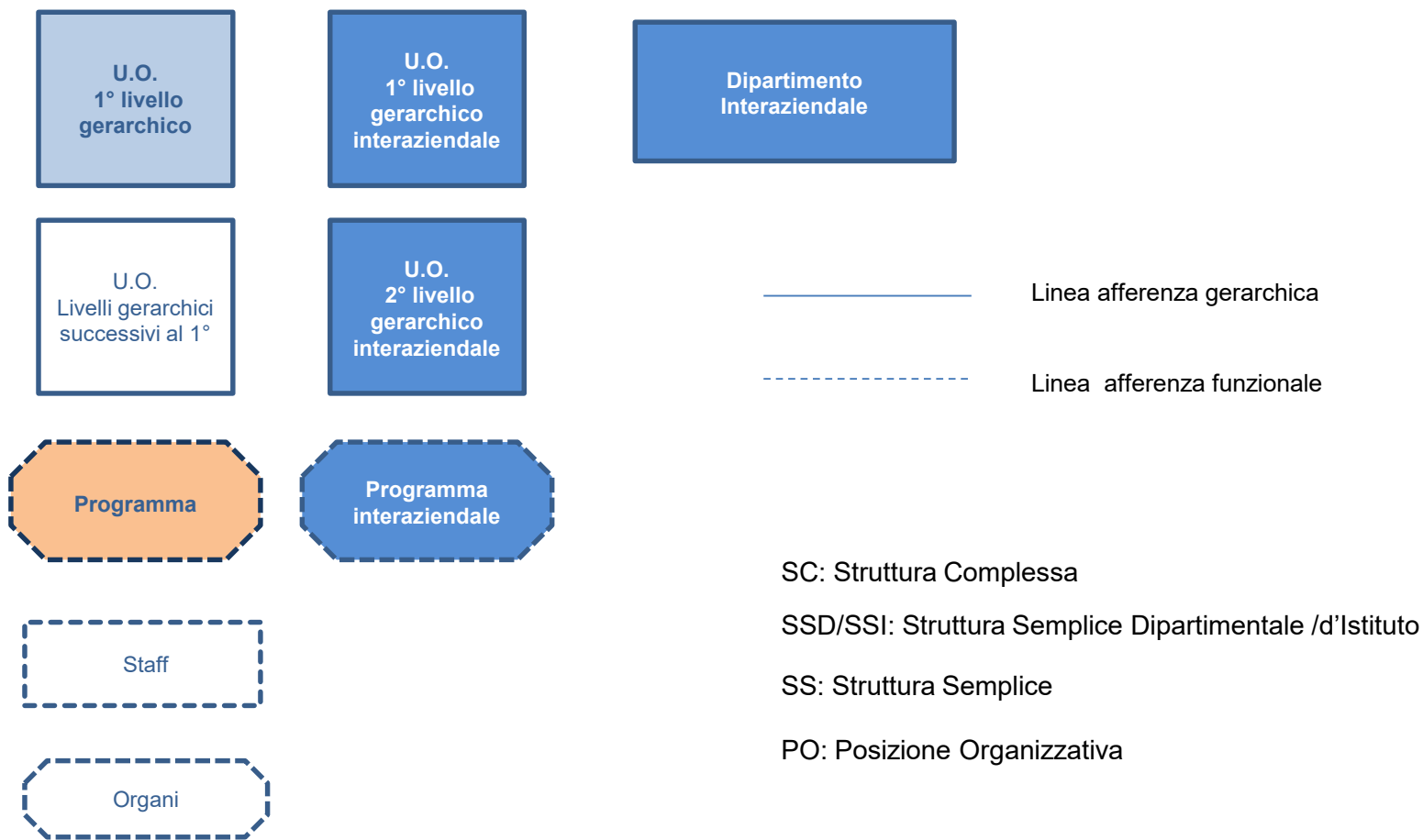
Aggiornato al 13/07/2020

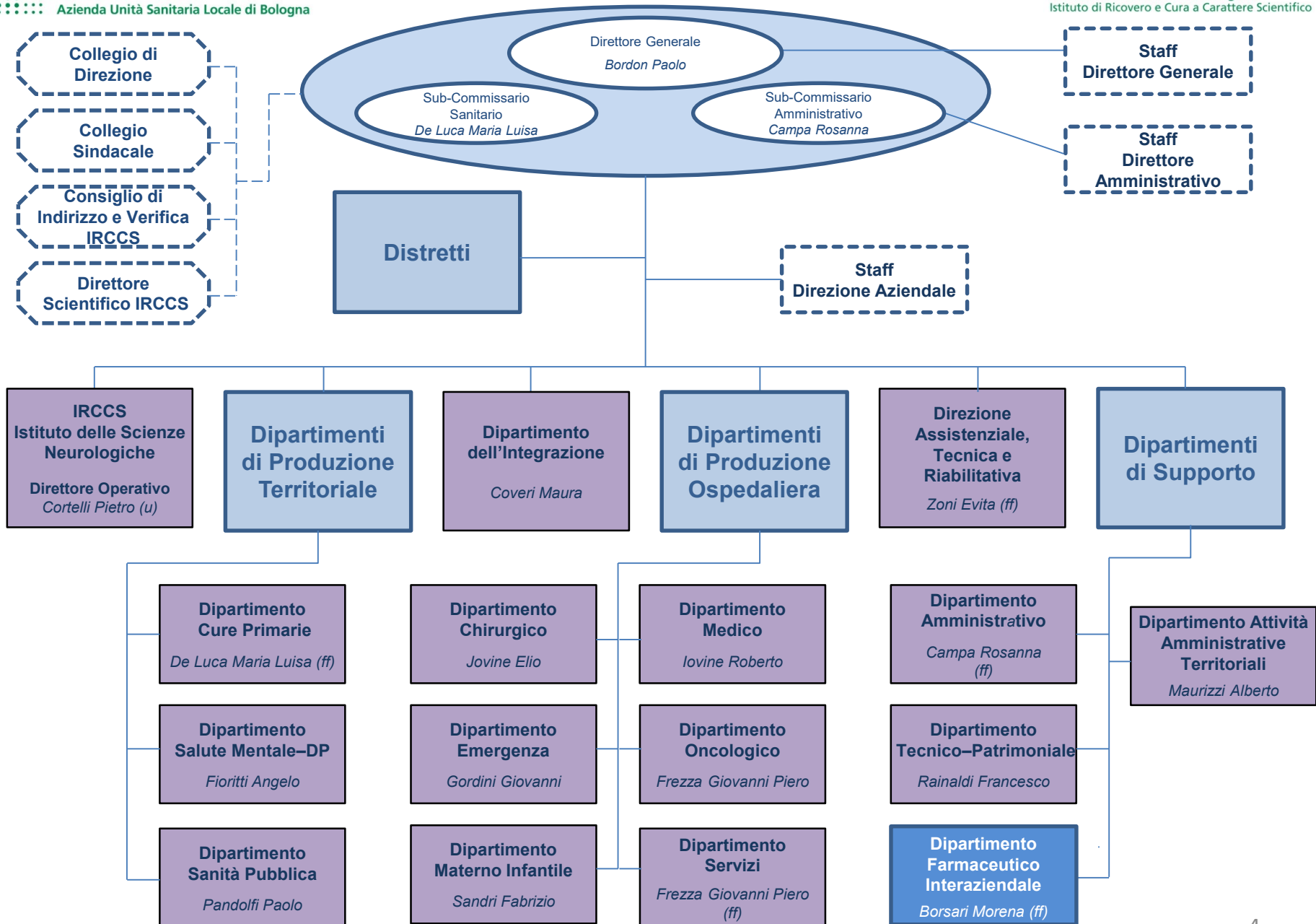
# INDICE

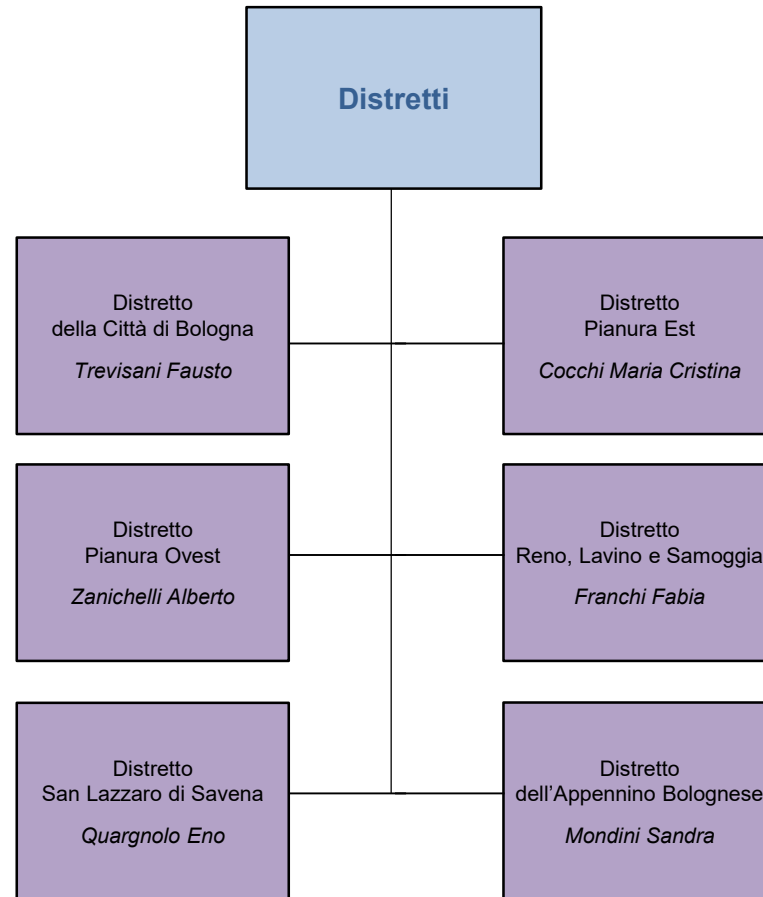
<b>LEGENDA</b>	pag. 3
<b>ASSETTO ORGANIZZATIVO COMPLESSIVO</b>	pag. 4
<b>I DISTRETTI</b>	pag. 5
<b>IRCCS - ISTITUTO DELLE SCIENZE NEUROLOGICHE</b>	pag. 6
<b>I DIPARTIMENTI DI PRODUZIONE TERRITORIALE</b>	
DIPARTIMENTO CURE PRIMARIE	pag. 7
DIPARTIMENTO SALUTE MENTALE – DIPENDENZE PATOLOGICHE	pag. 8-9
DIPARTIMENTO SANITÀ PUBBLICA	pag. 10-11
<b>I DIPARTIMENTI DI PRODUZIONE OSPEDALIERA</b>	
DIPARTIMENTO CHIRURGICO	pag. 12
DIPARTIMENTO EMERGENZA	pag. 13
DIPARTIMENTO MATERNO INFANTILE	pag. 14
DIPARTIMENTO MEDICO	pag. 15-16
DIPARTIMENTO ONCOLOGICO	pag. 17
DIPARTIMENTO SERVIZI	pag. 18-19
<b>IL DIPARTIMENTO DELL'INTEGRAZIONE</b>	pag. 20
<b>I DIPARTIMENTI DI SUPPORTO</b>	
DIPARTIMENTO AMMINISTRATIVO	pag. 21
DIPARTIMENTO TECNICO-PATRIMONIALE	pag. 22
DIPARTIMENTO ATTIVITA' AMMINISTRATIVE TERRITORIALI	pag. 23
DFI - DIPARTIMENTO FARMACEUTICO INTERAZIENDALE	pag. 24
<b>DATeR – DIREZIONE ASSISTENZIALE, TECNICA E RIABILITATIVA</b>	pag. 25
<b>STAFF DIRETTORE GENERALE</b>	pag. 26
<b>STAFF DIRETTORE AMMINISTRATIVO</b>	pag. 27
<b>STAFF DIREZIONE AZIENDALE</b>	pag. 28



## LEGENDA ORGANIGRAMMI







**IRCCS**  
**Istituto delle Scienze Neurologiche**  
Direzione Generale  
*Bordon Paolo*

Collegio Sindacale

Consiglio di  
Indirizzo e Verifica

Direttore Operativo  
*Cortelli Pietro (u)*

Direttore Scientifico  
*Lodi Raffaele (u)*

Comitato  
Tecnico e Scientifico

**UO**  
**Direzione**  
**Amministrativa**  
**IRCCS**  
**(SC)**  
*Gambetti Cristina*

**UO**  
**Clinica**  
**Neurologica**  
**(SC)**  
*Liguori Rocco (u)*

**UO**  
**Neuroradiologia**  
**(SC)**  
*Cellerini Martino*

**UO**  
**Anestesia e**  
**Rianimazione OB**  
**(SC)**  
*Bellocchio Angela (ff)*

**UO**  
**Riabilitazione**  
**Sclerosi Multipla**  
**(SSI)**  
*Lugaresi Alessandra (u)*

**Programma**  
**Neurochirurgia**  
**Pediatria**  
*Zucchelli Mino*

**UO**  
**Innovazione e**  
**Sviluppo**  
**(SSI)**  
*Lodi Raffaele (u) (ff)*

**UO**  
**Direzione**  
**Sanitaria IRCCS**  
**(SC)**  
*De Luca Maria Luisa (ff)*

**Programma**  
**Patologia**  
**Neuromuscolare**  
**dell'adulto e**  
**Neuroimmunologia**  
*Non assegnato*

**UO**  
**Medicina**  
**Riabilitativa**  
**Infantile**  
**(SC)**  
*Cersosimo Antonella*

**UO**  
**Neurochirurgia**  
**(SC)**  
*Sturiale Carmelo*

**UO**  
**Neuroradiologia**  
**OM**  
**(SSI)**  
*Simonetti Luigi*

**Programma**  
**Epilessia**  
*Tinuper Paolo (u)*

**UO**  
**Epidemiologia e**  
**Statistica**  
**(SSI)**  
*Nonino Francesco*

**UO**  
**Qualità e**  
**Governo Clinico**  
**(SS)**  
*Non assegnato*

**UO**  
**Neurologia OB**  
**(SC)**  
*Michelucci Roberto*

**UO**  
**Medicina**  
**Riabilitativa e**  
**Neuroriabilitazione**  
**(SC)**  
*Piperno Roberto*

**Programma**  
**Neurochirurgia**  
**Vascolare e d'Urgenza e**  
**Neurotraumatologia**  
*Non assegnato*

**UO**  
**Medicina**  
**Riabilitativa OB**  
**(SSI)**  
*Colombo Carolina*

**Programma**  
**SLA,**  
**Atassia, Amiloidosi e**  
**Miastenia**  
*Salvi Fabrizio*

**Programma**  
**Neurogenetica**  
*Non assegnato*

**UO**  
**Clinica Neurologica**  
**– Rete Neurologica**  
**Metropolitana**  
**(NeuroMet)**  
**(SC)**  
*Cortelli Pietro (u)*

**UO**  
**Neurologia OM**  
**e Rete Stroke**  
**Metropolitana**  
**(SC)**  
*Zini Andrea*

**UO**  
**Neuropsichiatria**  
**Infantile**  
**(SC)**  
*Cortelli Pietro (u) (ff)*

**UO**  
**Chirurgia del**  
**Basicranio e**  
**Neuroncologia**  
**(SSI)**  
*Non assegnato*

**UO**  
**Disturbi dello**  
**Spettro Autistico**  
**(SSI)**  
*Visconti Paola (ff)*

**Programma**  
**Neuroimmagini**  
**Funzionali e Molecolari**  
*Tonon Caterina (u)*

**Programma**  
**Neuropatologia delle**  
**Malattie**  
**Neurodegenerative**  
*Non assegnato*

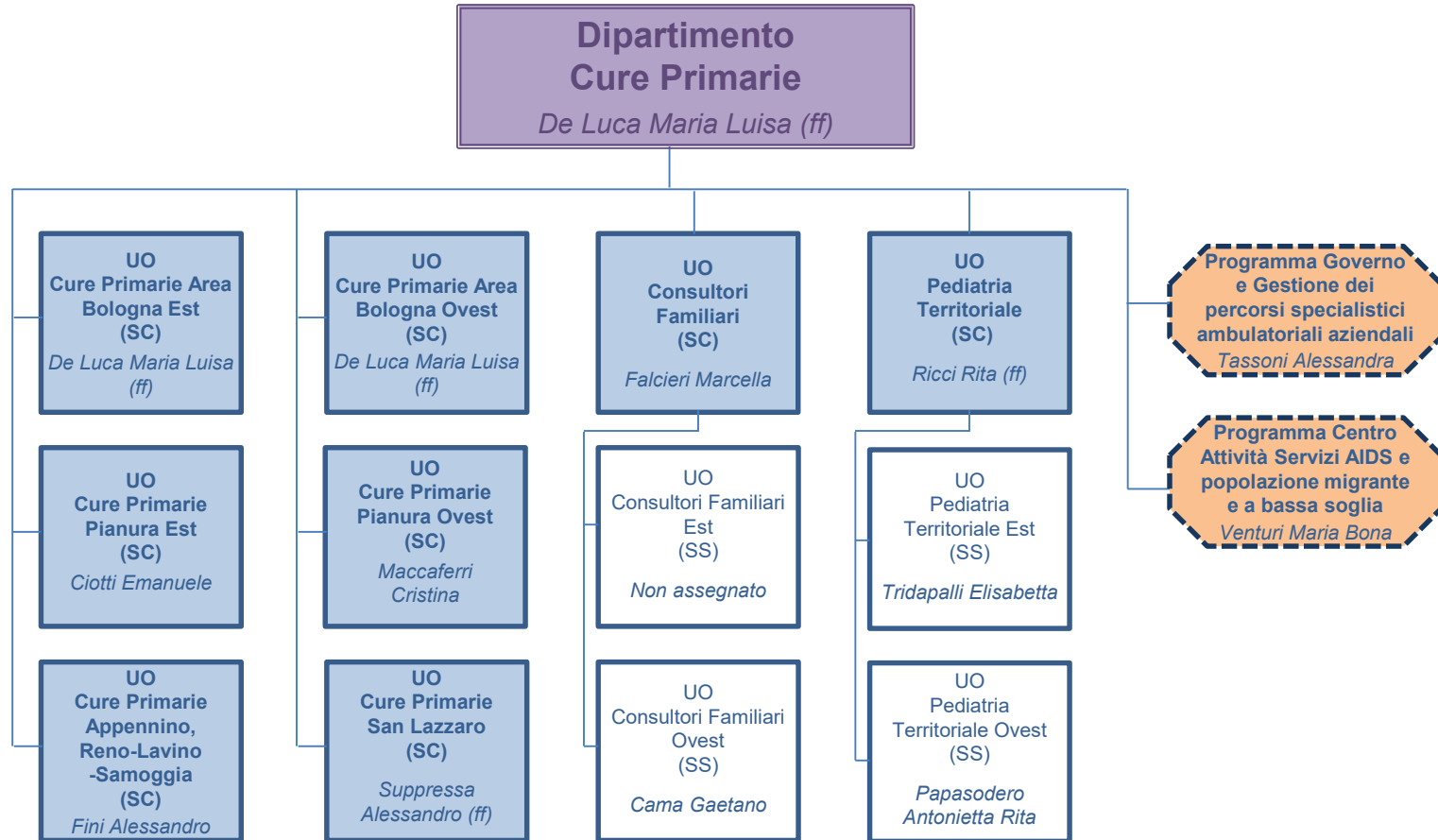
**UO**  
**Neurologia**  
**AOU**  
**(SS)**  
*Guarino Maria*

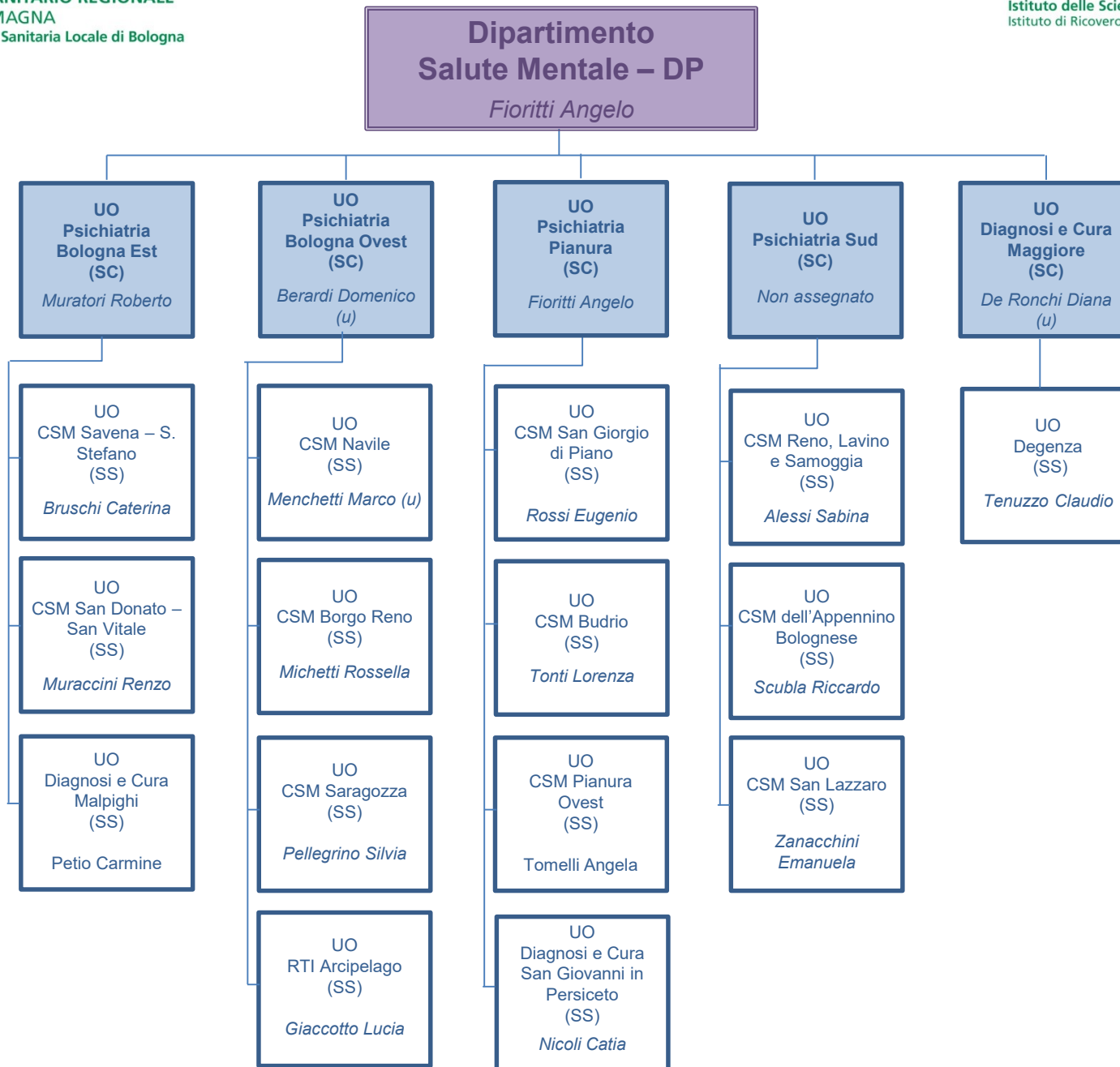
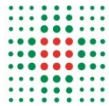
**UO**  
**Malattie**  
**Neuromuscolari**  
**dell'Età Evolutiva**  
**(SS)**  
*Non assegnato*

**Programma**  
**Neuroradiologia con**  
**tecniche ad elevata**  
**complessità**  
*Agati Raffaele (ff)*

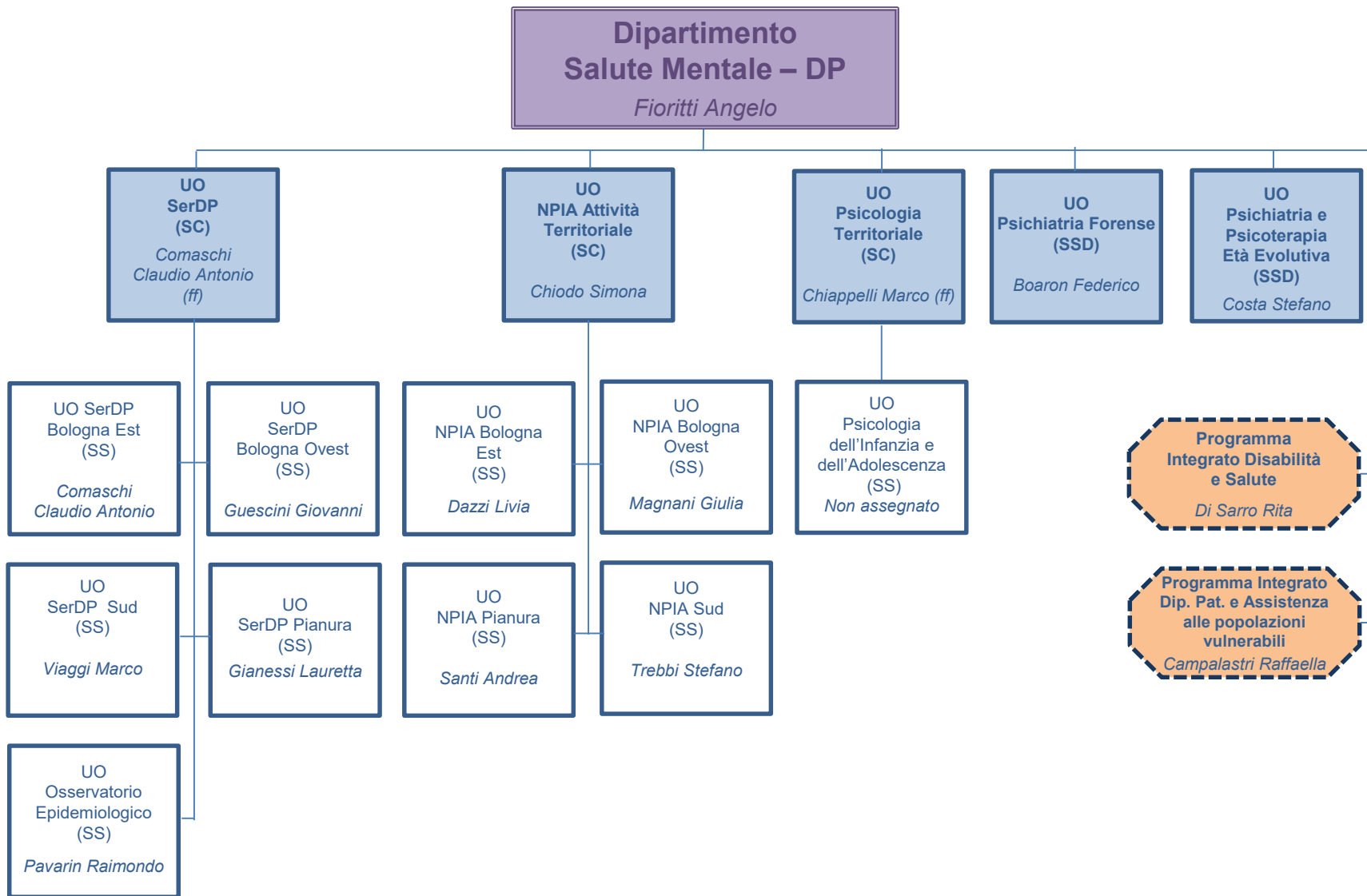
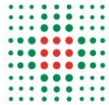
**Programma**  
**Neurofarmacologia**  
**Clinica**  
*Non assegnato*

**Programma**  
**Neurochirurgia Ipofisi**  
*Mazzatenta Diego (u)*



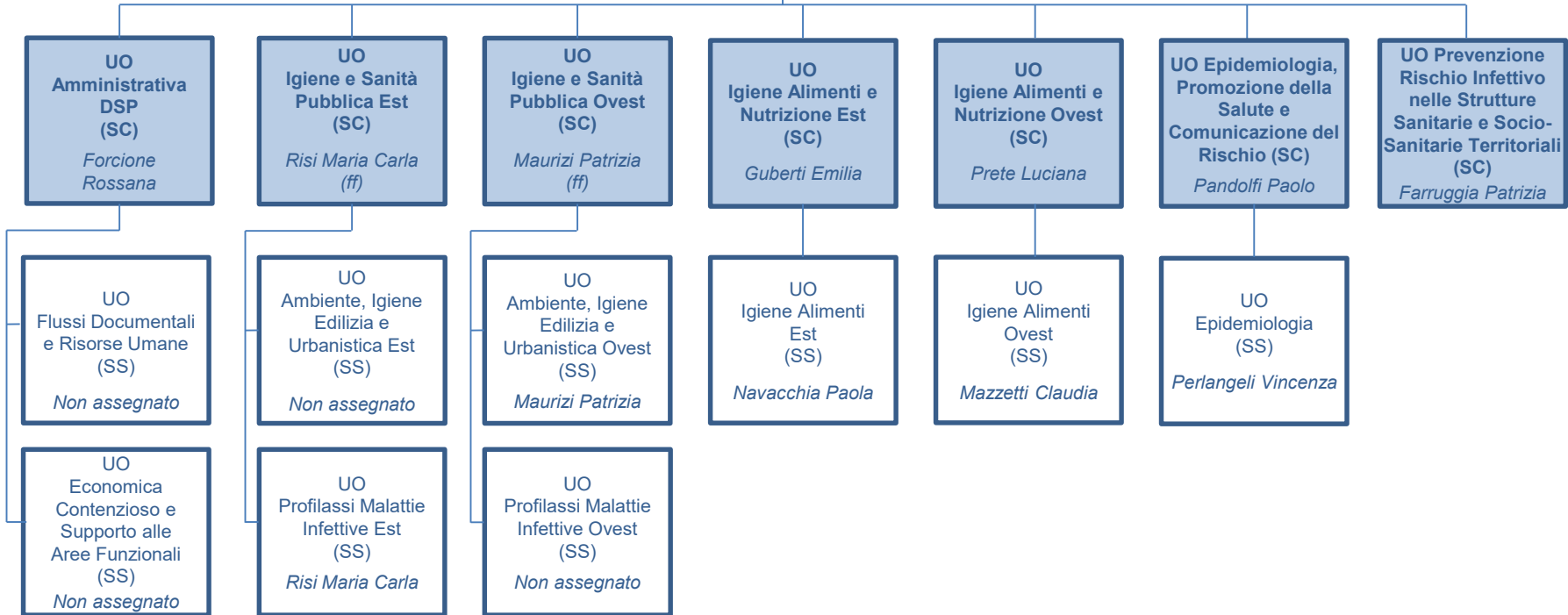


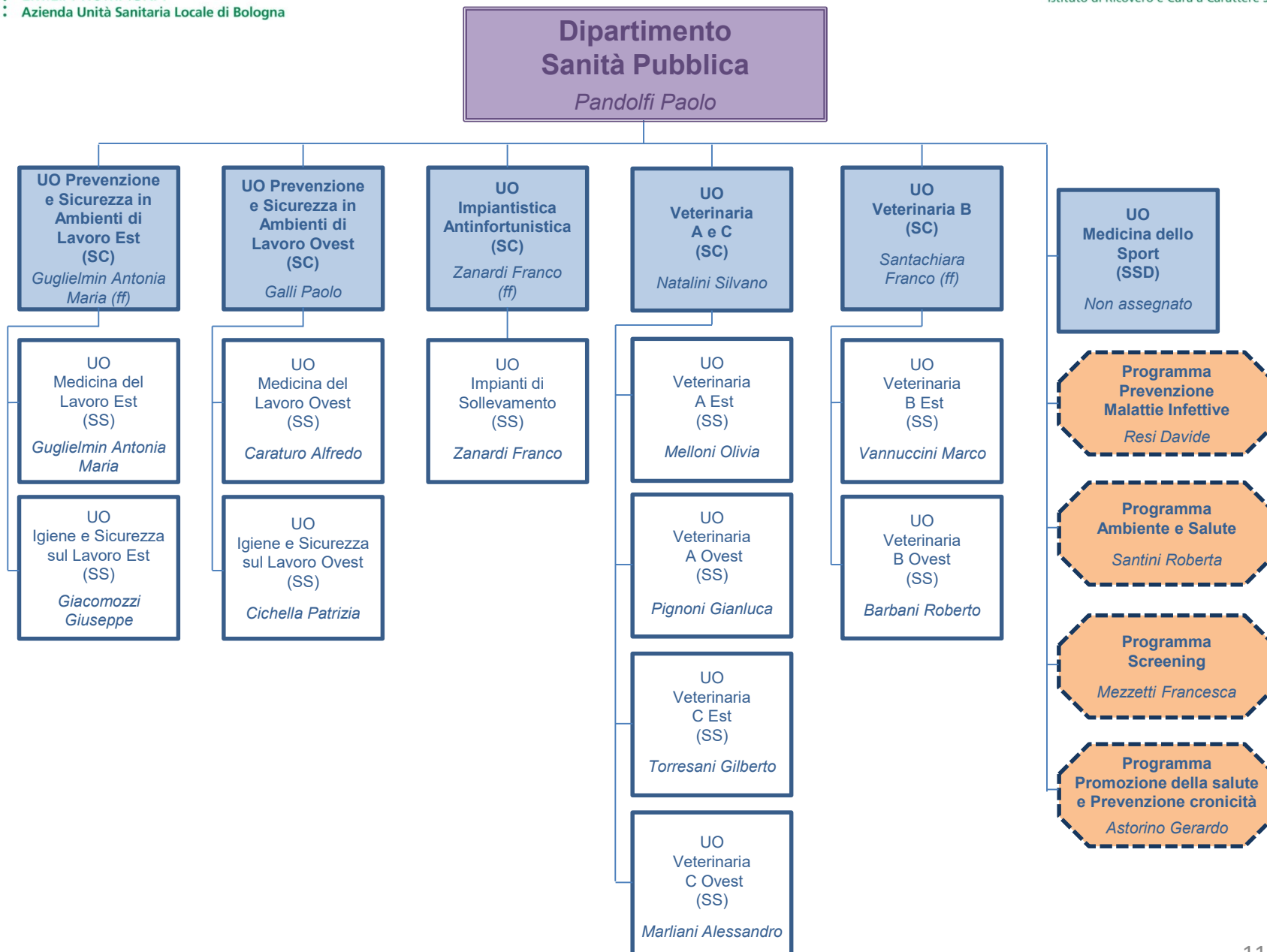
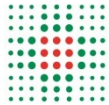


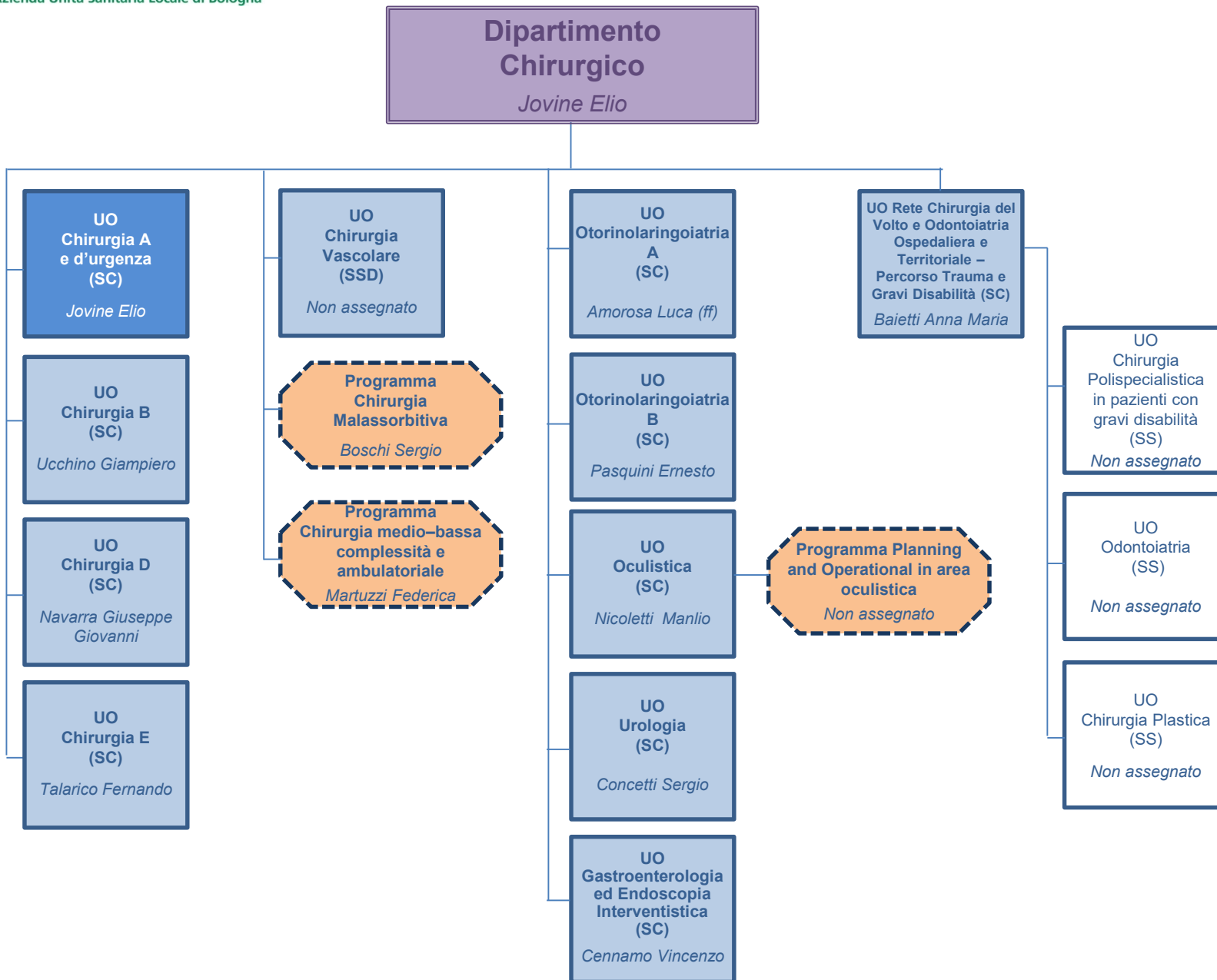
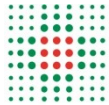


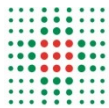


**Dipartimento  
Sanità Pubblica**  
*Pandolfi Paolo*



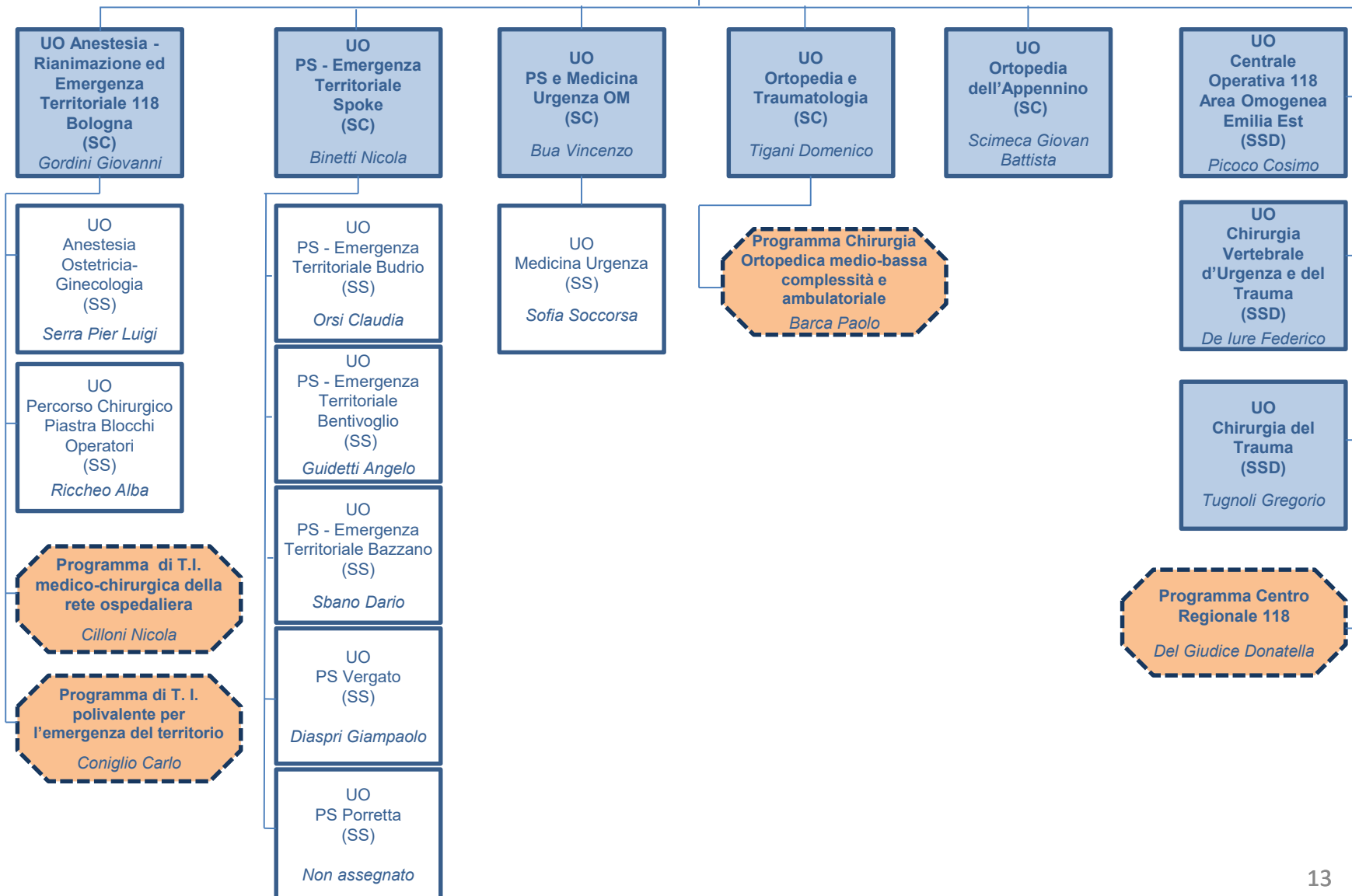


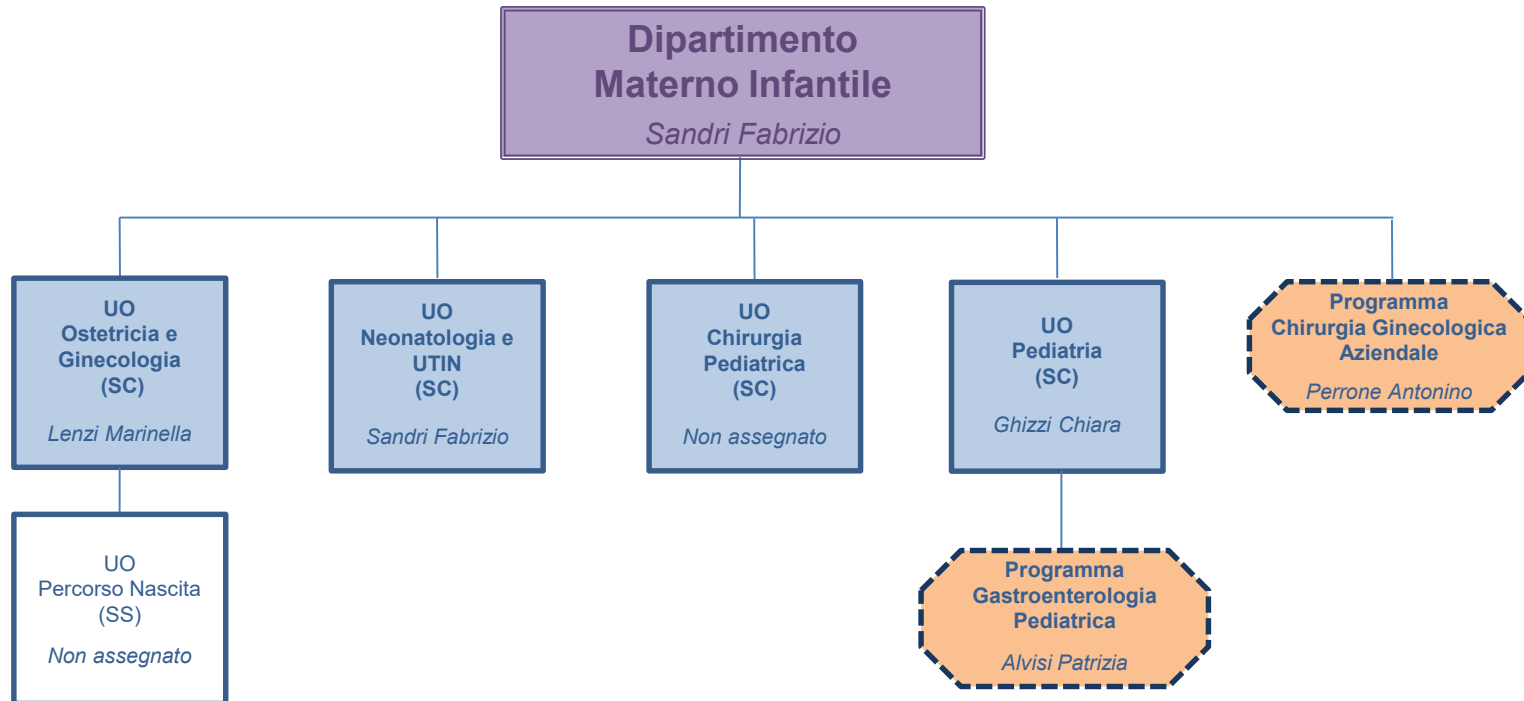


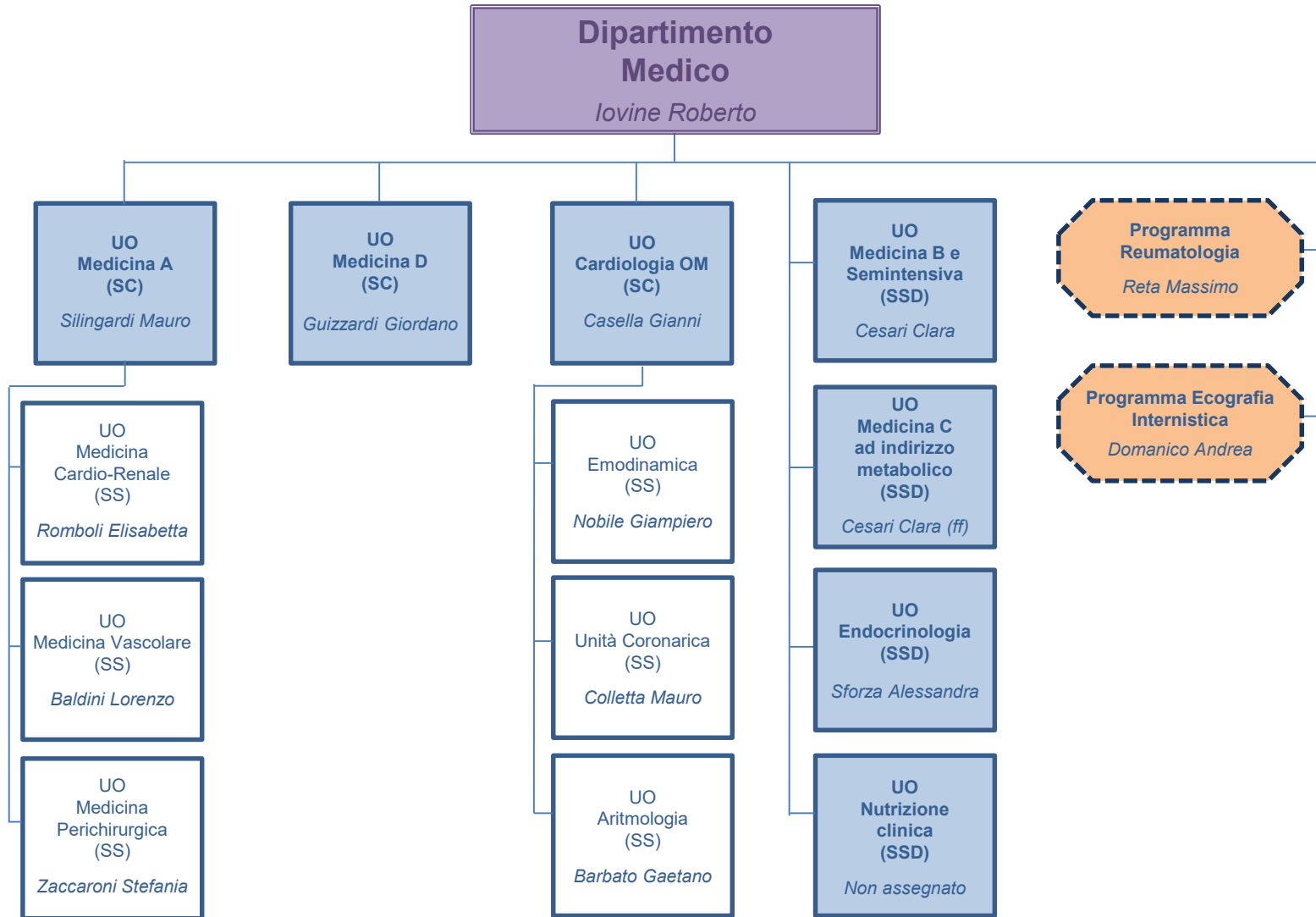


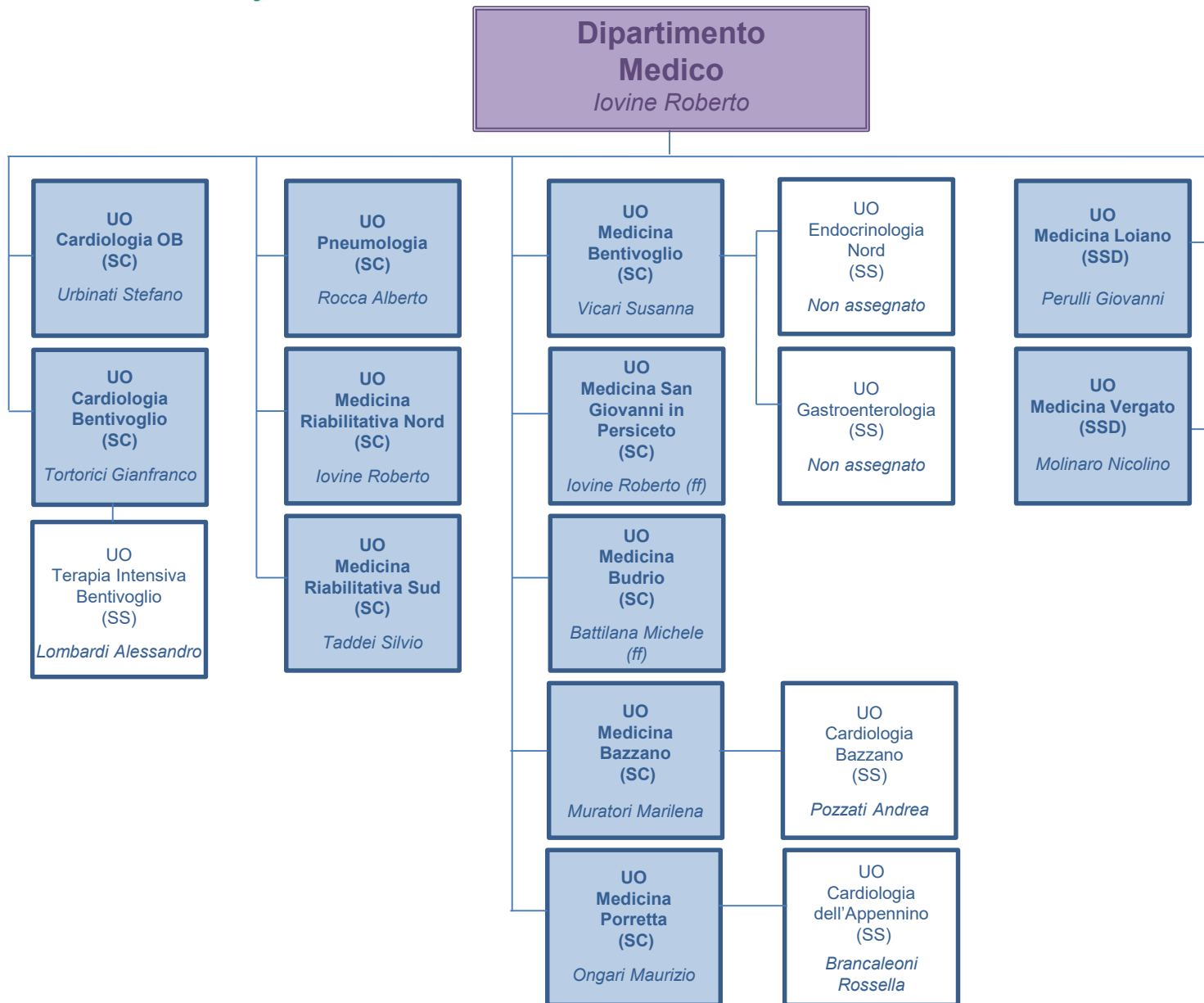
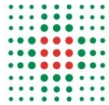
# Dipartimento Emergenza

*Gordini Giovanni*

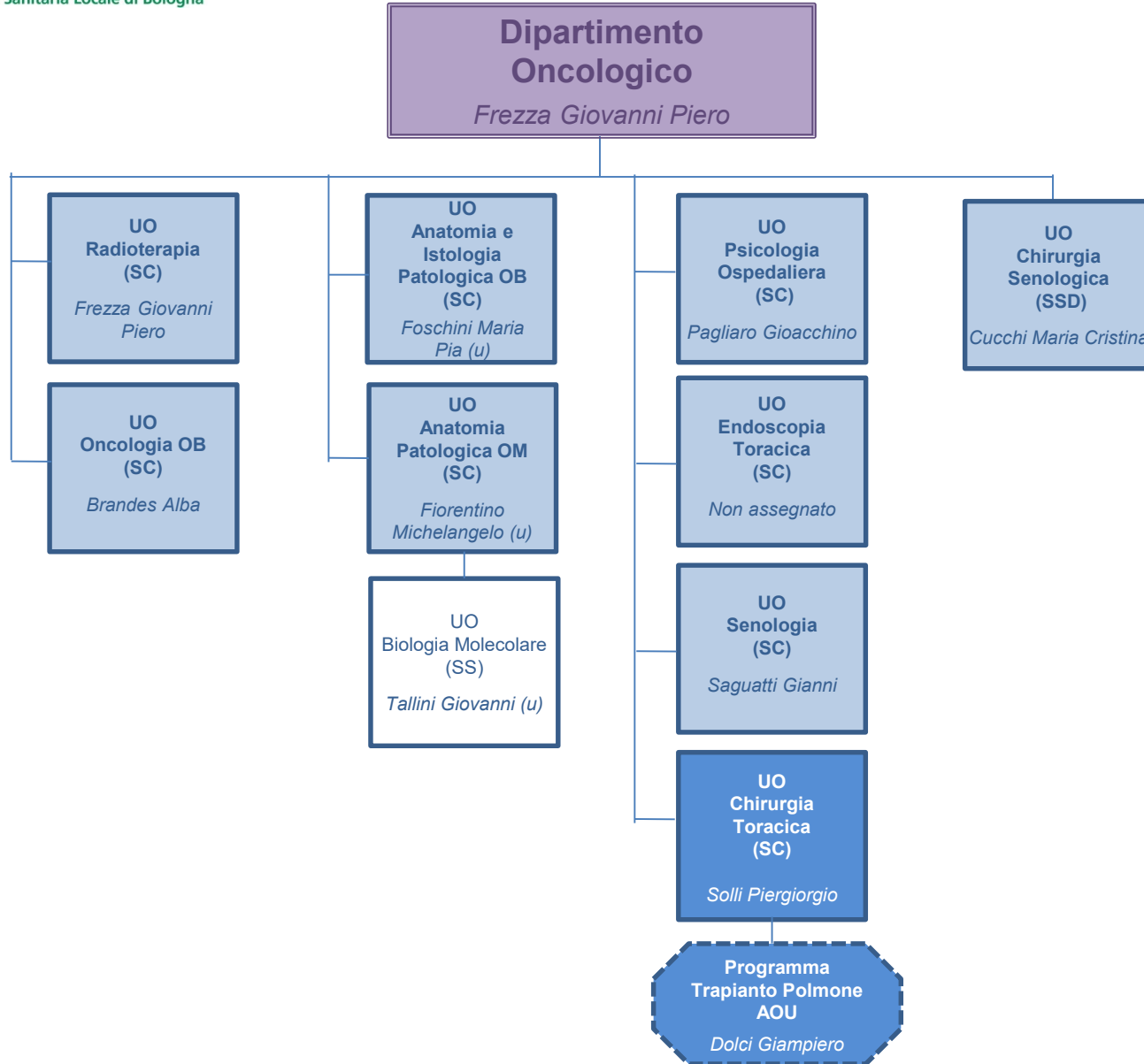


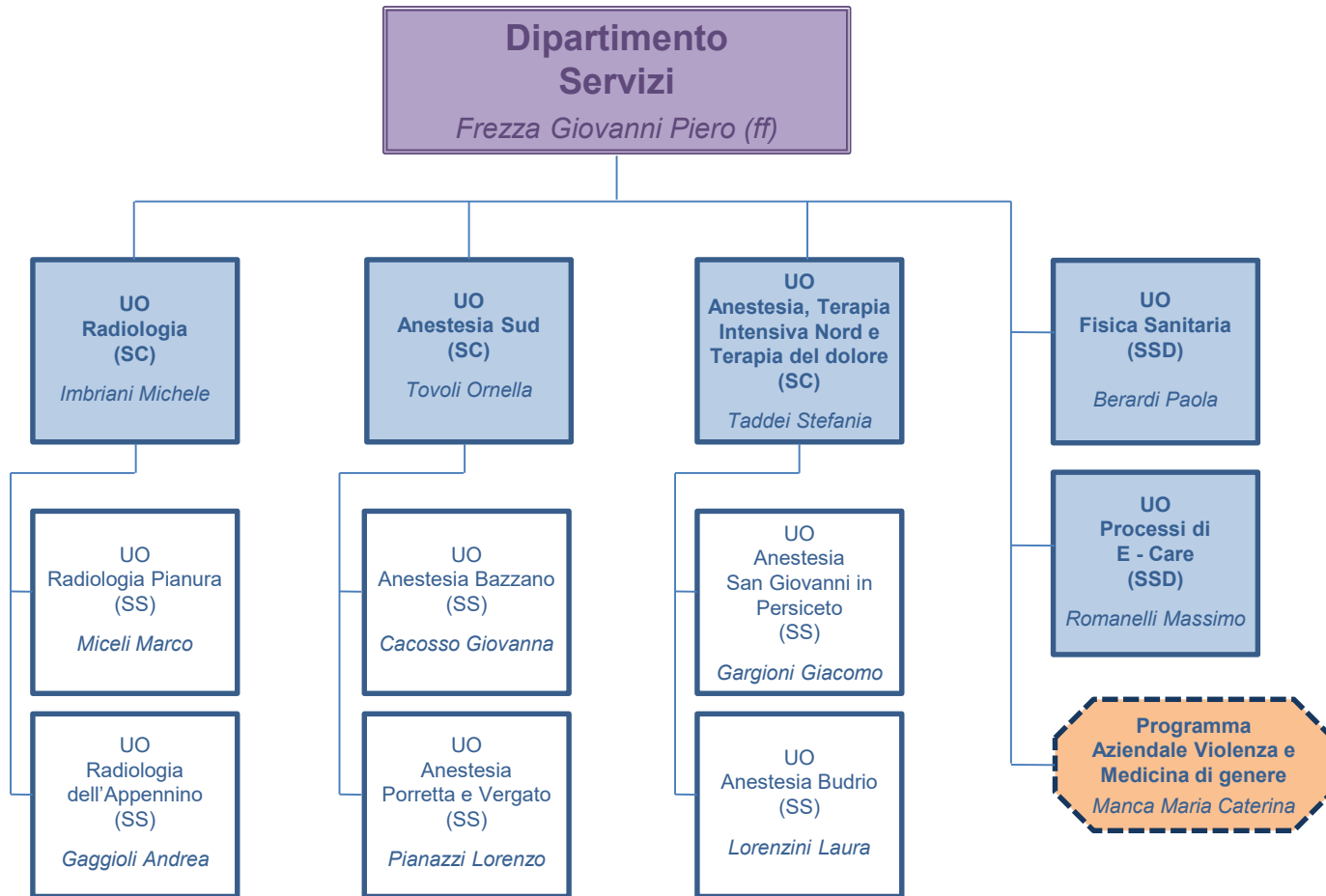


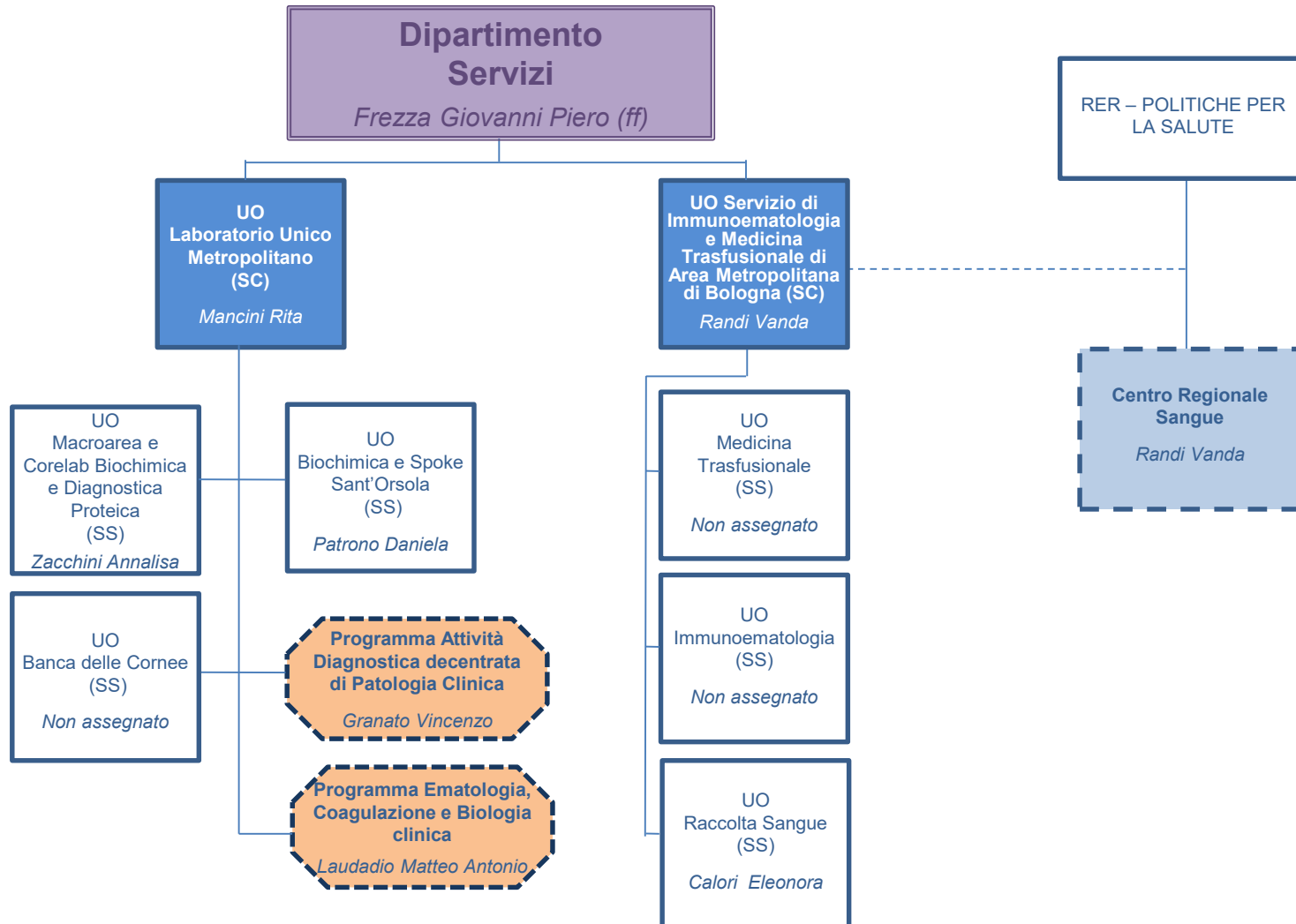
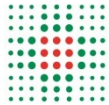


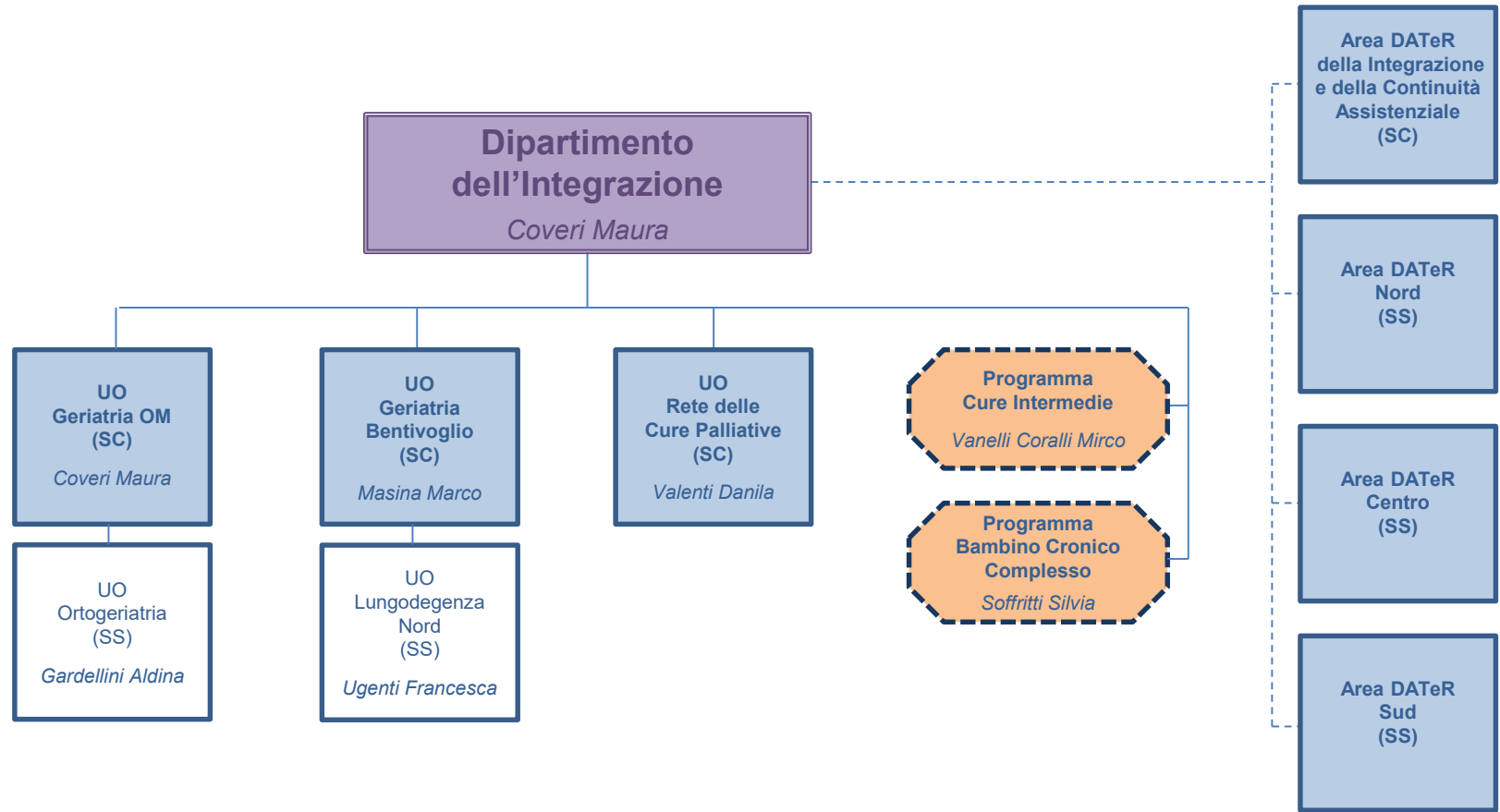


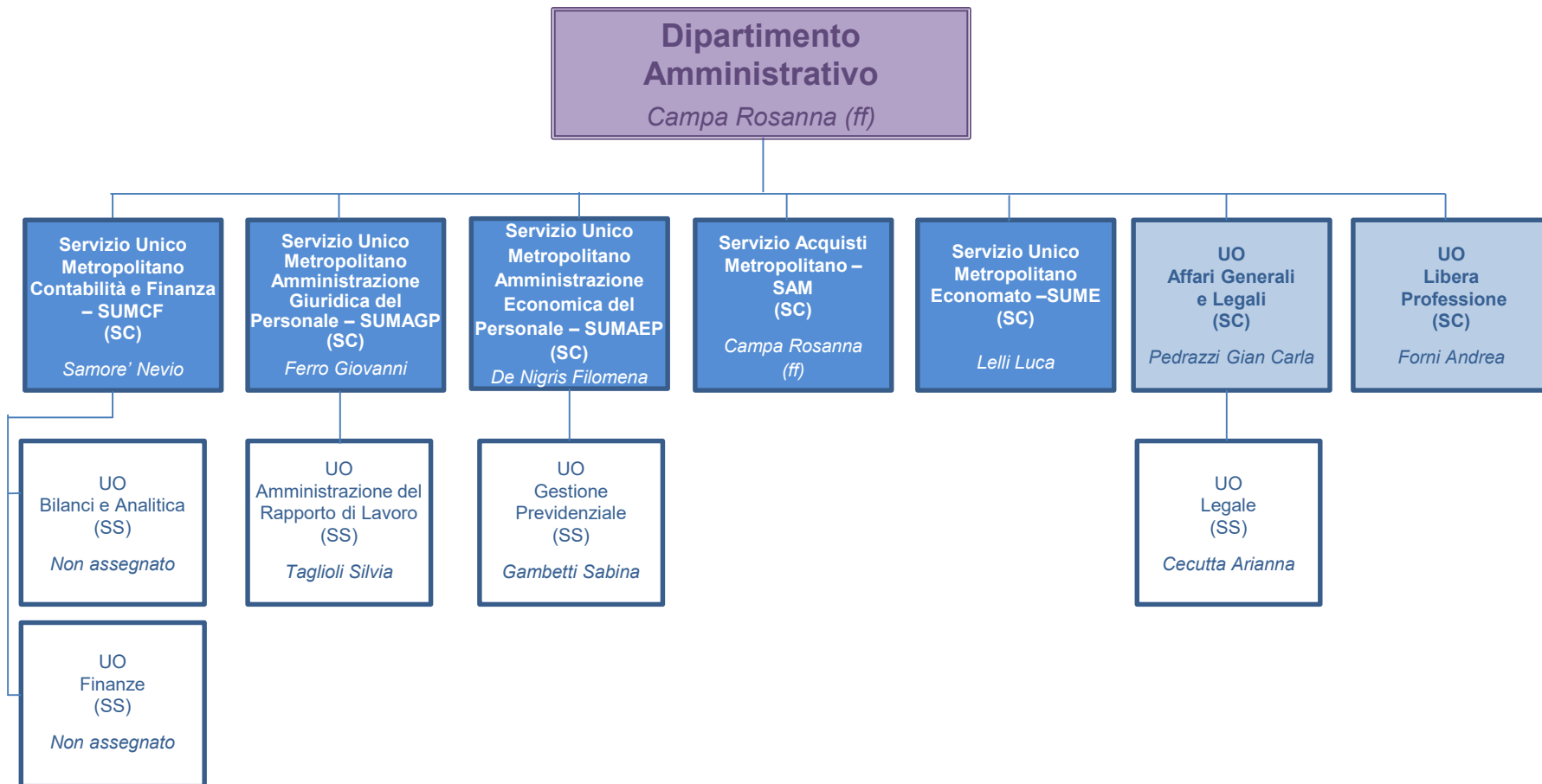


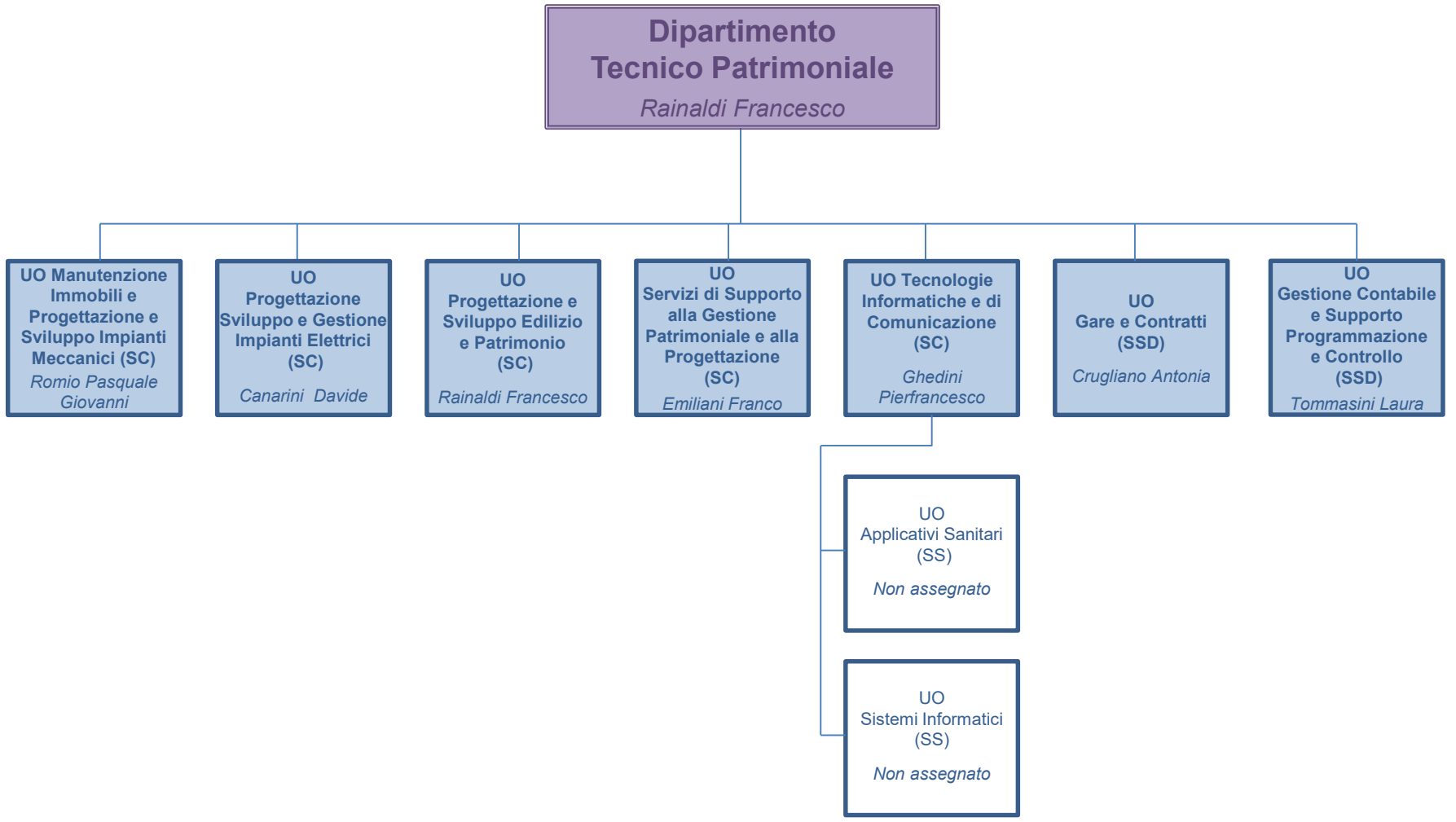


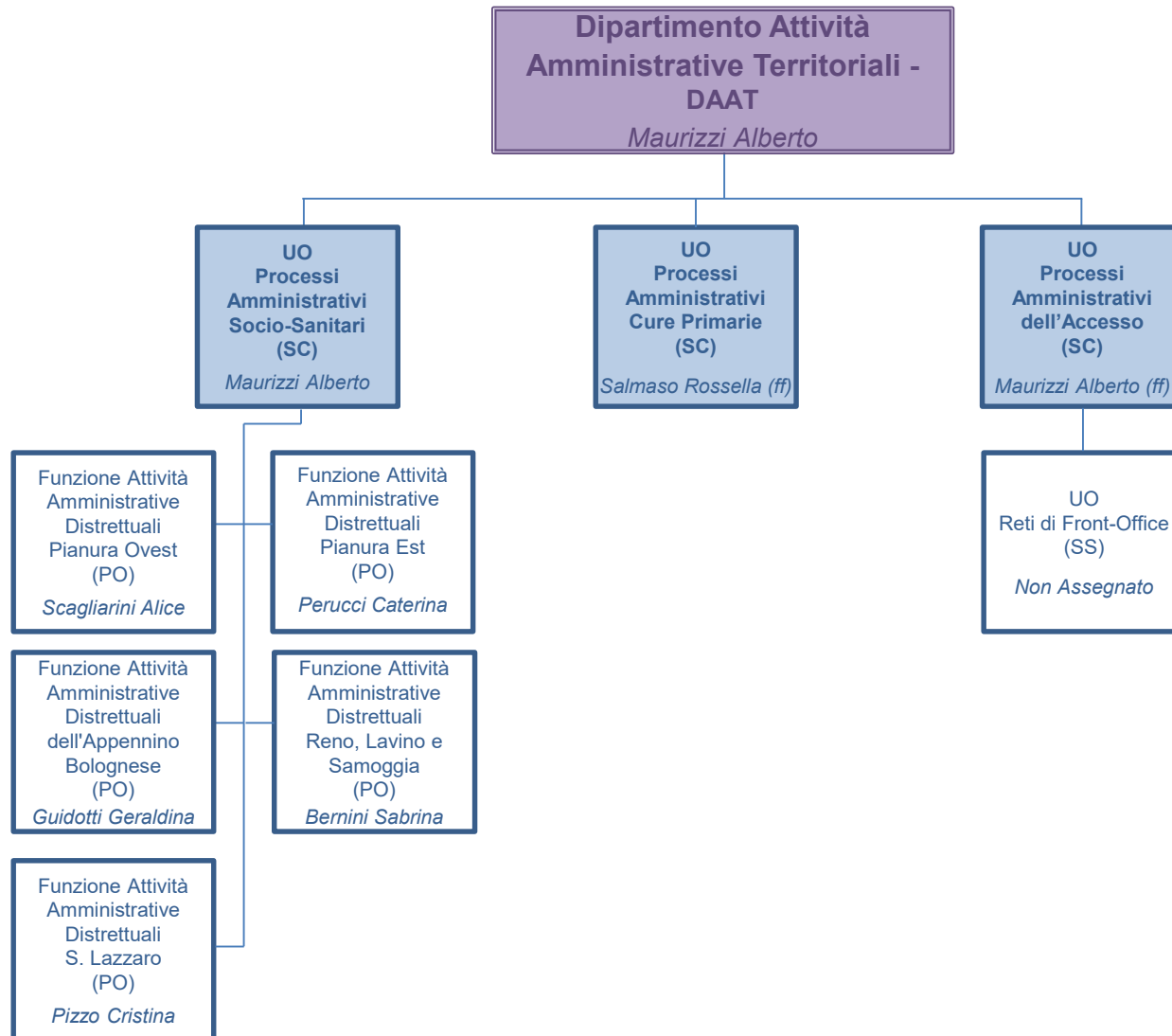


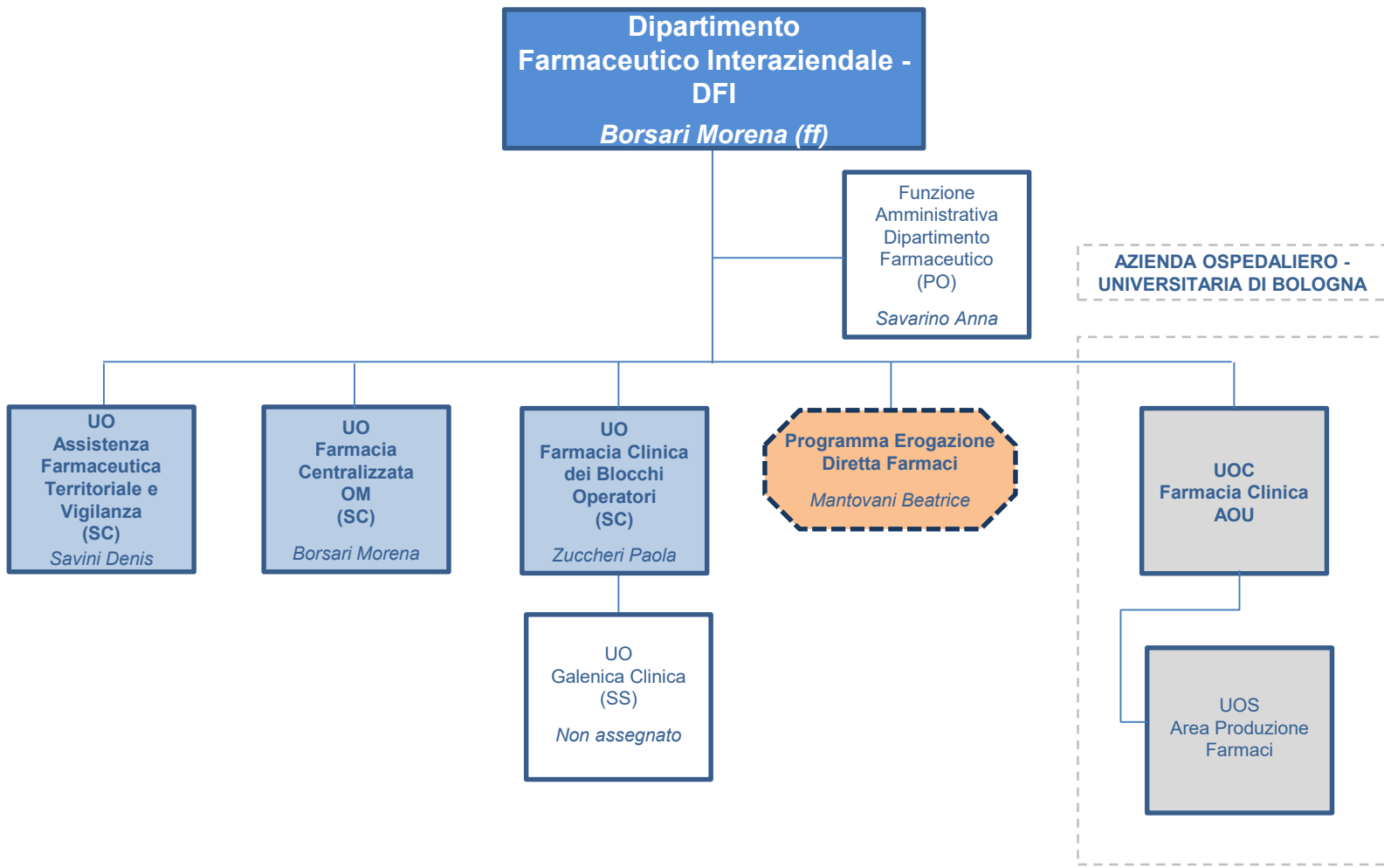














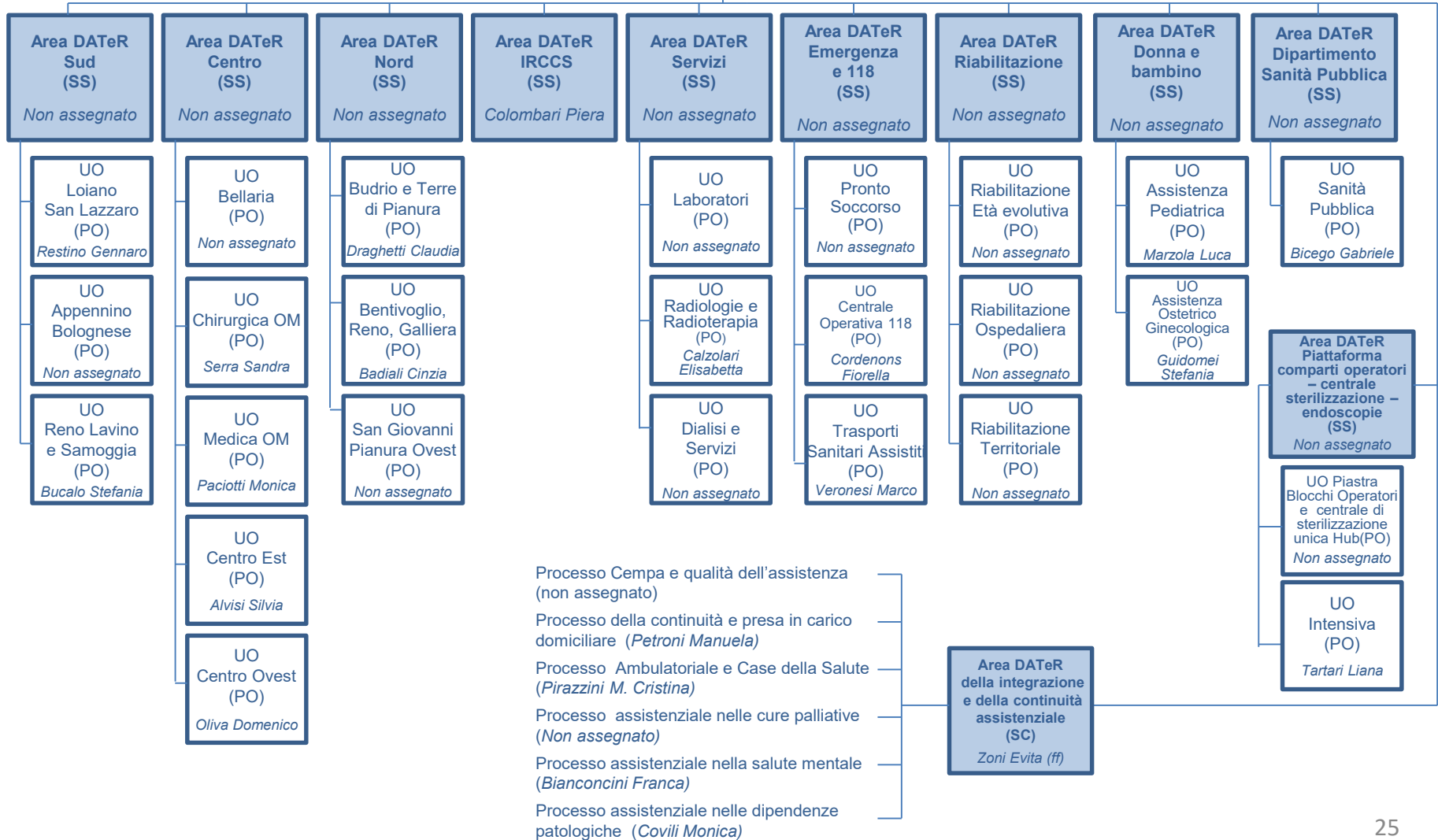


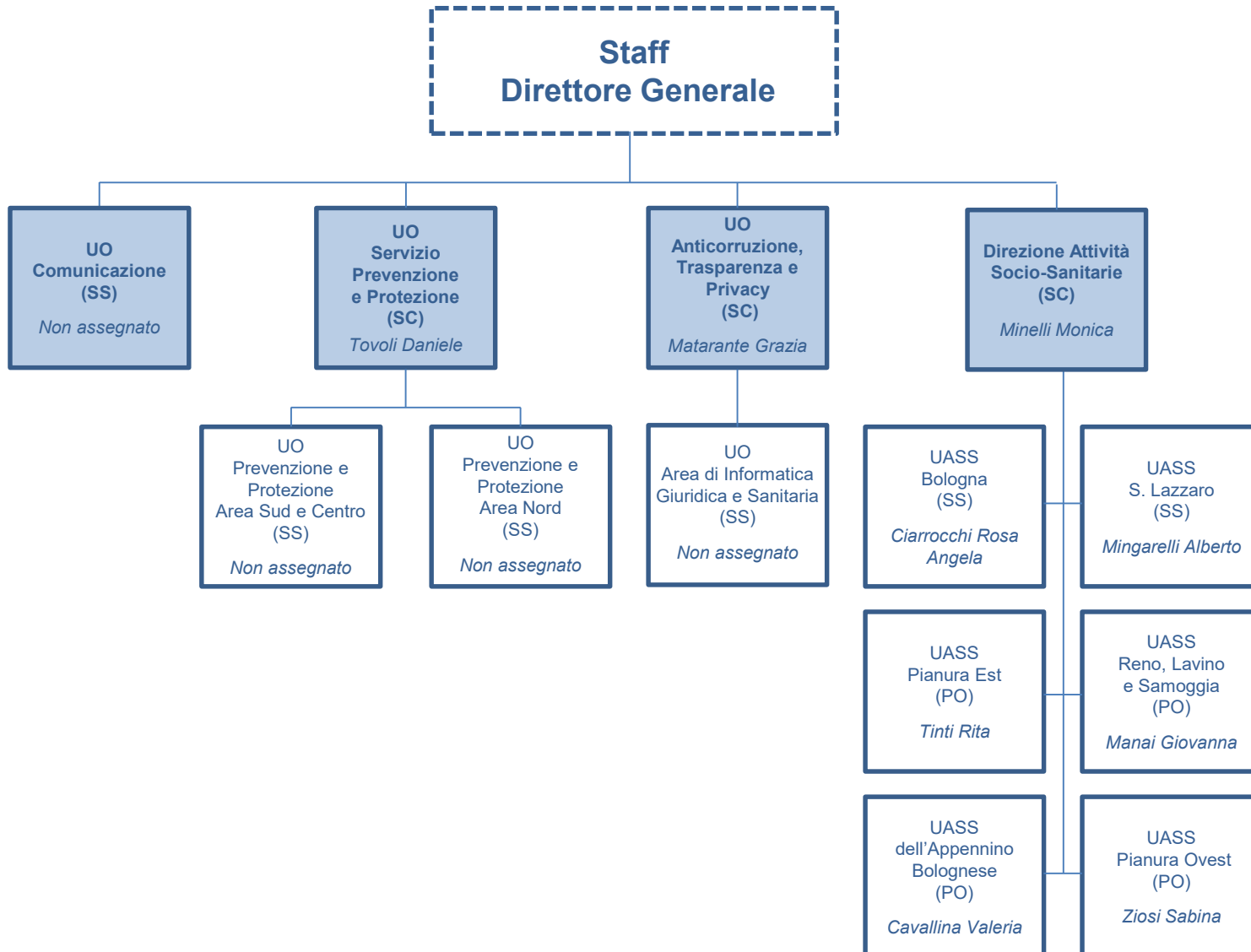
**DATeR**  
**Direzione Assistenziale,  
Tecnica e Riabilitativa**  
*Zoni Evita (ff)*

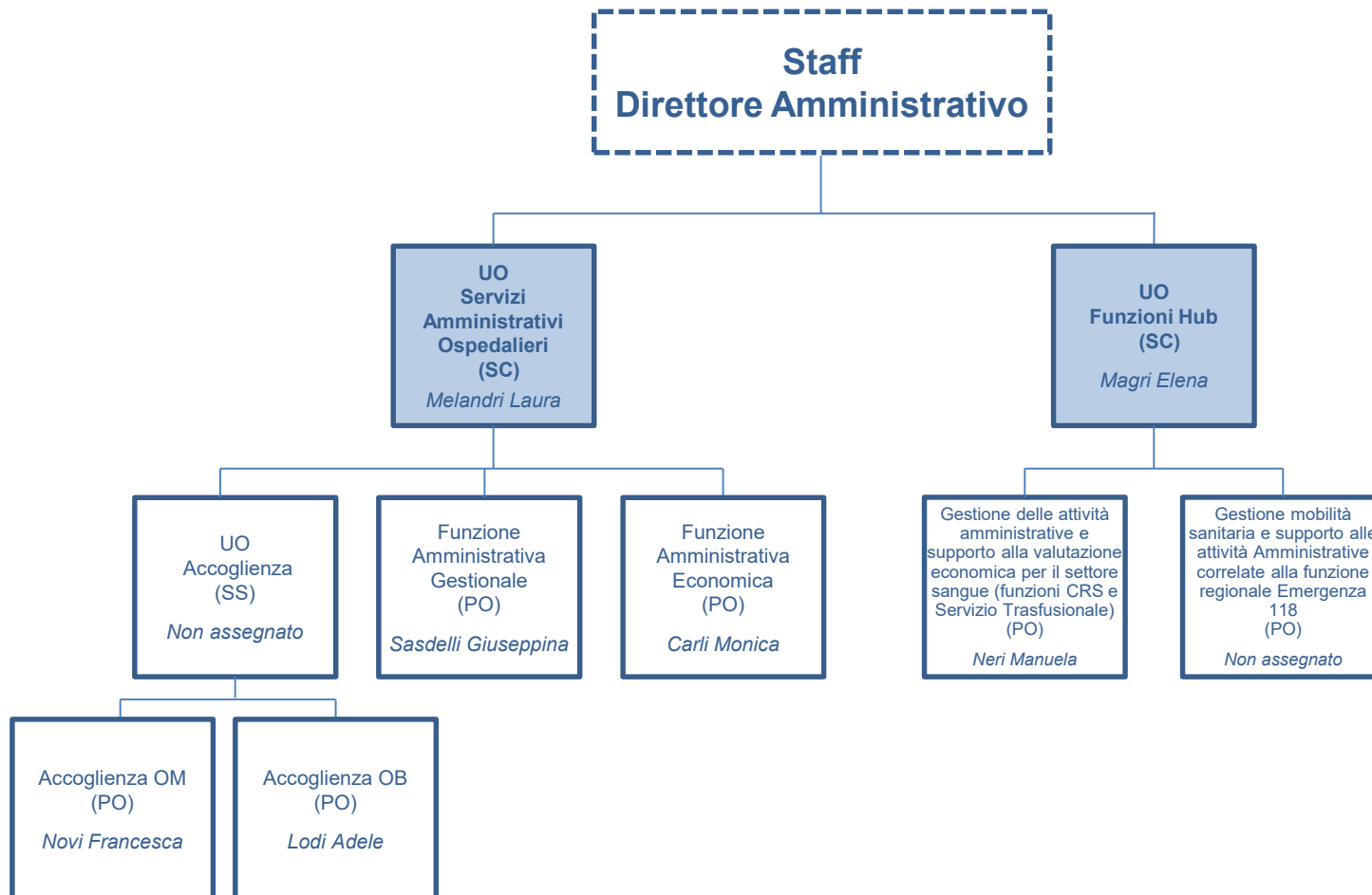
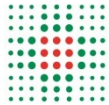
**UO**  
**Amministrativa**  
**e segreteria**  
**DATER**  
**(SSD)**  
*Dalfiume Luca*

Staff Direzione  
DATeR

Processo Prevenzione e controllo  
delle infezioni – Igiene ambientale e  
smaltimento rifiuti  
(Billi Manuela)  
Sicurezza dei Processi e gestione  
del rischio clinico  
(Marchesini Nicoletta)







**STAFF**  
**Direzione Aziendale**

